

Breeders Choice

Alpaca Auction

Sunday 30th August 2015

12 Noon



On Farm —Undercover @ Pacofino Alpaca Stud

‘Coorumbene’ 270 Murrimba Road, Wingello

Southern Highlands, NSW

Contact P: 02 4934 1799

Site P: 0407 913 950

Information for Buyers

AUCTION START: Sunday 30th August 2015 Auction –12 Noon

INSPECTIONS: Auction Day from 9.00 AM or By Arrangements Prior to Auction with Vendors

REGISTRATION: All prospective buyers must register at the Landmark Buyer Registration Office on site prior to auction. Terms are strictly cash unless prior arrangements have been made with the auctioneers.

DELIVERY: Will be at the conclusion of the sale.

TRANSPORT: Buyers should make their own transport arrangements prior to the auction.

INSURANCE: Representatives of insurance companies will be in attendance or recommended on sale day.

HEALTH: As Per Vendors. Refer to Page 5 & 6

AAA TRANSFERS: All animal transfers with the AAA will be at the purchasers cost.

STATE HEALTH PROTOCOL: Buyers, please ensure that you are aware of the necessary State Health Protocol required at the destination of your purchase.

OPENING BIDS: Minimum opening bid applies, Single Lots—\$400.00. Females with Crias at Foot—\$800.00.

TERMS & CONDITIONS: All stock is offered under standard terms and conditions. These are available from the auctioneers and are displayed around the Auction sale venue. GST will be charged on top of bid price i.e. \$1500 + \$150 GST.

TERMS OF PAYMENT: Terms of payment are strictly cash at time of purchase in accordance with the conditions of sale. Bank or approved cheques accepted on prior arrangement. For further information contact Andrew Sloan of Landmark 0428 522 204 or Wilson Beer 0428 505 520.

BUYING ORDERS, TELEPHONE BIDDING: Buyers orders can be placed with Landmark Personnel who will be in attendance on Auction day. Telephone Bidding, available onsite for both national and international, will be available on the day and should be arranged by Friday 28th August. Buying Orders will be handled By Wilson Beer 0428 505 520 . Phone Andrew Sloan 0428 522 204 or Wilson Beer 0428 505 520 / 03 5480 6267.

CATALOGUES: All details in this catalogue are provided by the Vendors and whilst all care has been taken in their preparation Landmark accept no responsibility for errors or mis-descriptions herein. Additional catalogues are available from Landmark.

VENDORS: Details on Page 5 & 6 .

Wilson Beer: 0428 505 520 Ph/Fax: 03 5480 6267 E: wilsonbeer@bigpond.com

Moss Vale Office: 02 4868 2266 F: 02 4869 6300

Andrew Sloan: 0428 522 204



Breeders Choice Alpaca Auction

Welcome to the 2015 Breeders Choice Alpaca Auction. This is the 3rd year for the Breeders Choice Alpaca Auction following on from the successful auctions of 2013 and 2014. The concept is building with new vendors and buyers and different on-farm venues each year. We hope, with the support of breeders both buying and selling, that this auction can continue as an annual event.

Our collective aim is to provide a venue for all breeders to showcase their breeding and for breeders of all sizes and budgets to be able to access a selection of genetics and fleece colours and styles to enhance their individual breeding programs.

Our 60 lots for your consideration in 2015 represent a unique opportunity to access in one location a selection of animals that reflect the diverse genetics and breeding programs of the 18 participating studs. This is NOT a dispersal sale. It is an event where successful industry participants have each made their "Breeders Choice" to put on offer for sale this year. We believe there is something for everything in this offering.

Each year we try something new to add interest to the auction format. This year, Patagonia Alpacas are donating a free on-farm service to one of their two new important stud males: Snowmass Elite Transcendence and Snowmass Royal Kahuna. This will go to the lucky buyer whose name is drawn from all successful buyers at the end of the auction.

We would love to see lots of breeders on farm at Pacofino on Sunday 30th August. However, if you are unable to get there on auction day to take a look, you are still able to contact the vendors prior to the auction for more details or arrange for a friend to have a look at the animals on your behalf so that you can participate in the auction by phone.

So, Alpaca breeders far and wide, we invite you to work through the catalogue make a note of the animals that you think would enhance your breeding program. What you will find is a great selection of animals with realistic starting prices, some unreserved lots and other lots with sensible reserves. We hope to see you there for whatever takes your fancy—a look, a catch up and a chat with an interesting mix of breeders and an opportunity for some new special additions to your herd.

Venue: On Farm, Undercover - Pacofino Alpaca Stud
'Coorumbene' 270 Murrumba Road, Wingello. NSW

Site Ph: Paul Cramley & Linda Davies 0407 913 950

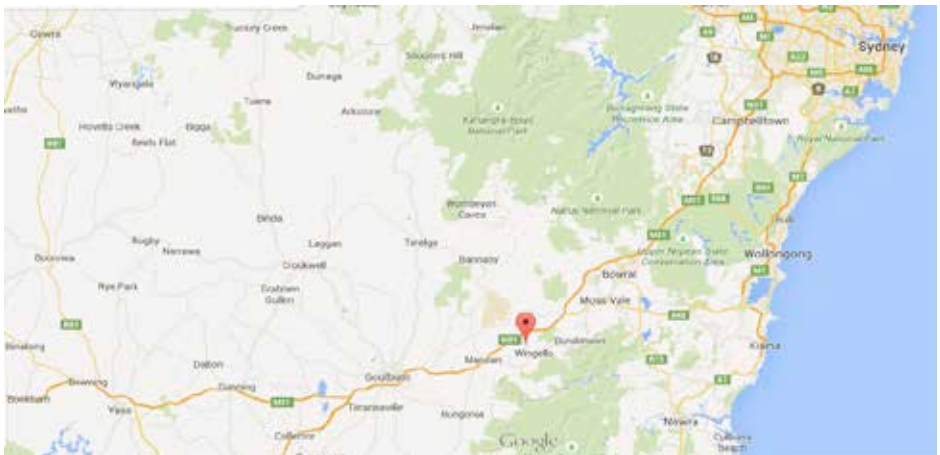
Catering: Free Tea , Coffee & Sausage Sizzle—*Complements of Pacofino*

Agistment: By arrangement with Paul Cramley Ph: 0407 913 950

Many thanks for your consideration and attendance at the 2015 Breeders Choice Alpaca Auction.

Auction Site / Location

Location
Pacofino @ Coorumbene
270 Murrimba Road
Wingello
Southern Highlands NSW



Support & Sponsorship for 2015 Breeders Choice Auction

**Many Thanks to Paul & Linda @ Pacofino for Hosting the 2015
Breeders Choice Alpaca Auction.**

The Complementary Sausage Sizzle Bar B Q, Tea & Coffee.

Vendors

Alpha Centauri Alpacas (Q—08/0281)

1628 Coolalie Road, Jerrawa NSW 2582
E: info@acalpacas.com

Cedar House Alpacas (Non-Assessed)

14820 Hume Hwy, Marulan NSW 2579
E: cedarhousealpacas@bigpond.com

Elysion Alpacas (Q—05/0004)

155 Foxgrove Road, Canyonleigh NSW 2577
E: elysion@bigpond.net.au

Follyfoot Alpacas (Q—05/0079)

27 Cusack Road, Oakville NSW 2765
E: linda@follyfoot.com.au

Forestglen Alpacas (MN3—NA 13019 & Q05/0063)

PO Box 62, Millthorpe NSW 2798
Farm: 381 Vittoria Rd, via Millthorpe NSW 2798
E: jennie.staples@trade.nsw.gov.au

Green Gully Alpacas (Q - 05/0002)

89 Brechts Lane, Kentucky South NSW 2354
E: cathyreid@bigpond.com

Greenwood Alpaca Stud (Non-Assessed)

PO Box 203, Rutherglen VIC 3685
Farm: 'Golden Vale', Humphreys Rd, Rutherglen VIC 3685
E: menas@mansfield.net.au

Hilldale Park Alpacas (Q—09/0343)

52 Budumba Road, Invergowrie NSW 2350
E: alpacas@hilldalepark.com.au

Hunter Alpaca Stud (Q—05/ 0048)

537 Louth Park Rd, East Maitland NSW 2323
Farm: 'as above' & 10 Felled Timber Rd, Oberon NSW
Email: bth.has@hunterlink.net.au

Jandarra Alpacas (Q—06/0202)

142 Woodlands Lane, Pambula NSW 2549
E: jandarra1@optusnet.com.au

Kia Ora View (Q—05/0048)

Contact: Peter & Narelle Tulip @ Hunter Alpacas (as above)

Kyona Alpacas (Q—10/0394)

170 Forest Reefs Road, Millthorpe NSW 2798
E: k.streatfeild@bigpond.com

Andrew & Bronwyn Munn

Mob: 0408 410 281 Mob: 0408 410 280
www.acalpacas.com

Wendy Billington & Peter Sulton

Mob: 0402 912 211 Mob: 0408 237 082
www.cedarhousealpaca.com.au

Paul & Frances Haslin

Ph: 02 4878 9429 Mob: 0417 264 219
www.elysionalpacas.com.au

Linda Moore

Mob: 0407 469 177
www.follyfoot.com.au

Jennifer Carey

Ph: 02 6368 7223 Mob: 0487 227 068
www.forestglenalpaca.com.au

Cathy & Noel Reid

Ph: 02 6778 7449 Mob: 0414 663 541
www.greengullyalpacas.com

Mena Schnizler

Ph: 02 6032 7557 Mob: 0418 993 300

Barry & Ann Hambrook

Ph: 02 6775 2510 Mob: 0455 270 779
www.hilldalepark.com.au

Peter & Narelle Tulip

Ph: 02 4934 1799, Oberon 02 6335 5241
Mob: 0412 496 520
www.hunteralpaca.com.au

Robert Crewe

Mob: 0428 598 324
www.jandarraalpacas.com

Robert & Carol Hill

P: 02 4934 1799

Kylie Streatfeild & Fiona McKenna

Ph: 02 6366 5067 Mob: 0428 665 067
www.kyonaalpacas.com

Vendors (cont.)

Lillyfield Alpacas (MN3—NA14012)
69 Graces Flat Road, Bowning NSW 2582
E: lillyfield@bigpond.com

Millpaca (Q—10/0374)
'Mill Creek' 286 Tindalls Lane, Berry NSW 2535
E: ian@millpaca.com

Pacofino Alpacas (Q—05/0055)
'Coorumbene' 270 Murrumba Road, Wingello NSW 2579
E: pacofino@bigpond.com

Patagonia Alpacas (Non—Assessed)
166 Diamond Swamp Rd, Meadow Flat NSW 2795
E: info@patagoniaalpacas.com.au

Towarri Alpacas (Non-Assessed)
'Kingdon Ponds' Wrights Rd, Wingen NSW 2337
E: fsmarshall@bigpond.com

Wyona Alpaca Stud (MN3—150003)
760 Mines Rd, Thuddungra NSW 2594
E: wyona1@activ8.net.au

Carolyn Austin & Geoff McGowan-Lay
Ph: 02 6227 6224 Mob: 0410 693 802
www.lillyfield.com

Ian Frith
Ph: 02 4464 1728 Mob: 0458 801 016
www.millpaca.com

Paul Cramley & Linda Davies
Mob: 0407 913 950
www.pacofino.com.au

Ian Braithwaite & Cathi McMullen
Ph: 02 6359 5036 Mob: 0418 608 447
www.patagoniaalpacas.com.au

Stuart Marshall
Mob: 0418 239 290
www.towarrialpacas.com.au

Karen & Andrew Caldwell
Ph: 02 6383 3531 Mob: 0428 333 857

Be a **SUCCESSFUL BIDDER at this years **Breeders Choice Auction** and **WIN A FREE SERVICE** from one of Patagonia 's **new IMPORTED MALES**.**

Patagonia Alpacas have kindly offered their full support and sponsorship of the 2015 Breeders Choice Auction.

They have offered a FREE (on farm) service from one of their new imported stud males.

Snowmass Elite Transcendence or Snowmass Royal Kahuna

To have a chance to win this service you must be a successful bidder at the Auction either On Site or by Phone.

The draw will take place at the end of the auction.

(Buyers from sales after the auction are not eligible to go into the draw).

Service to be taken at Patagonia Stud (by 31st August 2016) with your choice of female.

This is a wonderful opportunity to not only **Buy Outstanding Alpacas** from **the Large Range of Superior Bloodlines on Offer at Market Value at this years auction**, but also put your stud in the draw to gain new genetics for your herd **- FREE**

**Snowmass Elite Transcendence and Snowmass Royal Kahuna
will be onsite for inspection at the auction.**

Lot 1. Acheron Fleur

Med Grey Female

IAR: 133242 DOB: 11/03/08



Blackwood Park Ronaldo SBlk

Airlie Amadeus SBlk

Sire: Yalin Romeo Blk

Dam: Peerless Saucy Miss MBR

Yalin Venus Sblk

Coonawarra Piaf MG

Mated: Open

Fleece: M: 27.6 SD: 4.4 CV: 16.0

Acheron Fleur is a great even coloured dam with a well balanced frame. She has had 3 cria: one black and the other 2 medium grey. She has many breeding years left and will be a great addition for anyone looking for coloured genetics.

a/c. Greenwood— Unreserved

Lot 2. Distinction Rose Sunset

Light Grey Female

IAR: 115439 DOB: 24/03/07



Jolimont Warrior SW

Suricaya Yrmische SW

Sire: Blue Grass Waterloo Sunset RG Dam: Cherry Hill GunsNRoses RG/Roan

Alpacos Park Ariel SW

Suricaya Velvet Brown SLB

Mated: Open

Fleece: TBA

Rose Sunset was a National Auction purchase who has proved herself a worthy decision. She has a dense, good crimp style. Only in the middle of her breeding life, she's a female who reproduces great quality fleece and well proportioned, well-grown cria (refer Thunderstruck).

a/c. Greenwood —Reserved

Lot 3. Elsendale Rosita

Dark Grey Female

IAR: 157380 DOB: 4/02/11



Peruvian Sonoma Imp W

Peruvian Claudillo SW

Sire: Blue Grass Rising Sun DG

Dam: Coolaroo PJS Rheala SBlk

Purrumbete Wave Dancer SW

Purrumbete Rhea WMbr

Mated: Open

Fleece: M: 23.5 SD: 5.2 CV: 22.2

Very proud, upstanding pretty female. Easy birther who brings cria to meet you. Only cria is the progeny of CH Altitude. He is Medium Grey with lovely soft fleece (refer Jet-master).

a/c. Greenwood —Reserved

Lot 4. Green Gully Xena

Med Fawn Female

IAR: 205916 DOB: 19/12/14



Jolimont Cassius W
Sire: Kia Ora View TemptationMF
Serenal Aphrael SMF

Ellen Vale PalladiumSW
Dam: Poets Corner Xanthe LF
Poets Corner Sabrina W

Mated: Weanling Female

Fleece: Untested

This very cute weanling female has a very long and lustrous first fleece which will show its full potential after shearing. Her genetics includes Jolimont Sculptor and Winterbrook Prince John making her a handy female for breeders seeking fineness.

a/c. Green Gully— Unreserved

Lot 5. Green Gully Haviana

Black Female

IAR: 205934 DOB: 20/02/15



Jolimont Tiberio MG
Sire: Jolimont Essien Blk
Jolimont Greta II MF

Longueville Park Brigalow SBLk
Dam: Green Gully Harriet MG
Warralinga Isadora I DG

Mated: Weanling Female

Fleece: Untested

This young female shows promise as a future elite breeding female. Her fleece displays the density and structure typical of Essien progeny and she has been shorn ready to commence her show career at the 2015 National Show.

a/c. Green Gully—Unreserved

Lot 6. Erragolia Thel's Gift & M/Cria

Med Grey Female

IAR: 129683 DOB: 23/04/07



Duffields Captain MoonlightSBLK
Sire: Longueville Park Black Opal SBLK
Chimu Rowena SBLK

Purrumbete King Alfred SW
Dam: Starwood Magnolia SW
Starwood Magdalana SDF

M/Cria at Foot: Green Gully Theodore 23/4/15 by Jolimont Essien

Mated: Jolimont Essien LMD 16/05/2015

Fleece: Sept 14: M: 25.0 SD: 4.86 CV: 1934 CF: 88.40% Cur: 24.45

An even coloured reliable breeding female with an adorable male cria at foot (Green Gully Theodore DOB 23/04/2015). She has a calm nature and is easy to handle. She has been re-mated to Jolimont Essien and is being offered as a very attractive 3 in 1 package.

a/c. Green Gully—Unreserved

Lot 7. Alpha Centauri Amberlina Solid White Female IAR: 202948 DOB: 08/04/14



Blue Grass Centurion LF Benleigh Lorimer SW
Sire: Encantador Sir Lancelot SW **Dam:** Elysion Aphrodite SW
 Encantador Lucinda RG/Roan Elysion Angelique SW

Mated: Elysion Jupiter SW LMD 25/05/15
Fleece: Sep 14: M: 21 SD: 5.3 CV: 25.1 CF: 92.7%

Amberlina is mated to Elysion Jupiter. She produces a fleece with excellent length and brightness with a good level of density. She has a very fine crimp style displaying good coverage into the extremities. We would expect Amberlina to produce a quality cria from this mating.

a/c. Alpha Centauri—Reserved

Lot 8. Alpha Centauri Indianah Med Brown Female IAR: 202943 DOB: 16/03/14



Blue Grass Centurion LF Wyterrica John Boy SBlk
Sire: Bedrock Sentinel LF **Dam:** Elitealpaca Iron Maiden DG
 Windsong Valley Summer Snow SW Morning Star Bluebell MG

Mated: Alpha Centauri Comanche LF LMD 25/05/15
Fleece: Sep 14: M: 17.4 SD: 4.6 CV: 26.4 CF: 100%

Indianah is a well grown female displaying a rich chocolate brown fleece. She is mated to Alpha Centauri Comanche and we would expect a great result from this match. Indianah carries a superfine fleece with a high frequency crimp and exceptional softness of handle. She would be an asset to the breeder looking for quality colour genetics.

a/c. Alpha Centauri—Reserved

Lot 9. Alpha Centauri Dezirae S Med Brown Female IAR: 202956 DOB: 28/10/14



Monara Park Mackinnon SBlk Purrrumbete Highlander SW
Sire: Wyterrica John Boy SBlk **Dam:** Windsong Valley Desert Rose SW
 Wyterrica Sophia Blk Windsong Valley Wildfire Blk

Mated: Open
Fleece: Untested

Dezirae is a robust, compact young female. She has an interesting mix of colour genetics through her pedigree and would be an asset to the breeder looking to add quality colour genetics to their herd.

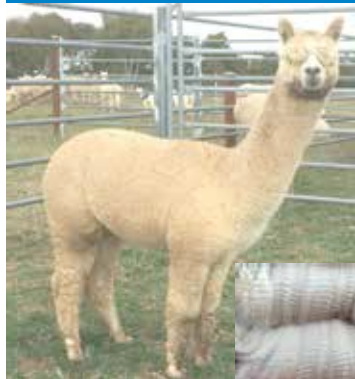
Dezirae was shorn as a cria on the 26/01/2015.

a/c. Alpha Centauri—Reserved

Lot 10. Forestglen Firenze

S Med Fawn Female

IAR: 197008 DOB: 28/3/14



Forestglen Maestro SW
Sire: Forestglen Angelo SMF
Forestglen Anatola LF

Jolimont Conquistador SW
Dam: Forestglen Miranda SW
Forestglen Maradonna MF

Mated: Maiden

Fleece: Nov 14: M:20 SD: 5 CV: 25.1 CF: 96.2% SL 80mm

A very stylish, upstanding, uniformly coloured, yearling female. Has dense, very finely crimped fleece and that attractive head and face that Angelo gives to his progeny. From one of our best framed dam lines, this girl is beautifully grown out and is ready to join. Her first fleece was first in its class at both Canberra & Bathurst Royals 2015.

a/c Forestglen—Reserved

Lot 11. Forestglen Masai Mara, F/Cria S Med Fawn Female

IAR: 195201 DOB: 17/3/13



Somerset Accoyo Challenger SW
Sire: Banksia P. Zulu Warrior SMF
Banksia P. Zena SMF

Jolimont Conquistador SW
Dam: Forestglen Morgana SW
Forestglen Morag MF

F/Cria at Foot: FG Mara Savona by FG Angelo SMF DOB: 2/4/15

Mated: Open

Fleece: Nov 14: M:24.8 SD: 5.6 CV: 22.5 CF: 84.4% SL: 105mm

Fleece Nov 13: M 21.2 SD: 5.1 CV: 24.1 CF 95.8% SL: 90mm

A medium fawn 2 in one package. A Quality dam at the beginning of her breeding life with a gorgeous female cria at foot. Masai has produced an exceptional length to her fleece while gestating, and is proving to be an excellent mother.

a/c. Forestglen—Reserved

Lot 12. Follyfoot Farm Golden Delight S Light Brown Female

IAR: 163990 DOB: 22/03/10



Schubert Maestro W
Sire: Belgrave Park Michelangelo SDF
Belgrave Park Kasey SDB

Keiana Lodge Rhett Blk
Dam: Keiana Lodge Anne Blk
Gallandeer Ridge Amulet Blk

Mated: Wyona Sensational S Blk

Fleece: 2014 5th: M: 25.8 SD: 4.9 CV: 18.99 CF: 85%

Delight is a quality proven female who had success in the show ring, with black pedigree on her Dams side. She has been joined to black as this has been successful with her first pregnancy, being the Dam of Rahdan Kryptonite, a multiple broad ribbon winner. Halter trained and easy to handle, she is an excellent mother who births and raises her cria with ease.

a/c. Follyfoot—Reserved

Lot 13. Pacofino Carmen & F/Cria S L Br Suri Female

IAR: 178556 DOB: 27/3/11



4Peruvian Olajuwon SBLK

LCA Tejas (US Imp) LF

Sire: ILR Mocha Java (US Imp) BLK/DB

Dam: Pacofino Zella SLF

Acero Marka's Cadmium LF

Pacofino Zelda SW

F/Cria at Foot: Bermuda Black By Surilana Islander DOB:22/11/14

Mated: Open

Fleece: Oct 14: M: 26.5 SD: 5.7 CV: 22.0 CF: 76.3%

This is a rare opportunity to purchase Carmen, a beautiful mum, with her striking young SBLK daughter, Bermuda Black (IAR 215237 DOB 22/11/14) sired by multiple broad ribbon winner Surilana Islander. Carmen is an elegant and strong boned female with a very silky handle to her fleece. BB is halter trained, loves a cuddle, and displays fine, lustrous and silky locks.

a/c. Pacofino—Reserved

Lot 14. Pacofino Vanilla Ice

Solid White Female

IAR: 207701 DOB: 28/3/14



Windsong Valley Iceman SW

Pacofino Marius SW

Sire: Pacofino Maximilian SW

Dam: Pacofino Vanilla Rose W

Pacofino Lavinia SW

Windsong Valley Rose SW

Mated: Open

Fleece: Oct 14: M: 17.4 SD: 4.3 CV: 24.6 CF: 100%

A stunning female with outstanding genetics carrying an extremely dense and fine fleece. This year she has achieved 3rd as a Junior at Canberra, Junior Champ Female at Moss Vale and Goulburn, and Highly Commended as an Intermediate in a very competitive class at Sydney Royal. Her sire has 6 broad-ribbons to his name, including a Supreme.

a/c. Pacofino—Reserved



Pacofino

**BREEDERS OF HUACAYAS AND SURIS
WITH OUTSTANDING GENETICS**

Wingello • Southern Highlands of NSW

0407 913 950

www.pacofino.com.au

Lot 15. Aingeal Ridge Firenze

Med Grey Female

IAR: 169660 DOB: 8/07/10



Blue Grass Waterloo Sunset RG Merungle Hot Chilli RG/Roan
Sire: Wyterrica Propangandda RG **Dam:** Merungle Gypsy Woman2 RG/Roan
 Wyterrica Dark Eyes SBlk Merungle Gypsey Queen MBr

Mated: Open

Fleece: M: 22.9 SD: 5.0 CV: 21.8

Firenze was purchased at ARidge dispersal as “empty”. She was not interested so we left her until next season. As she became fatter and fatter I rang previous owners who told me she had one mating to Hillside Gardens Stefano ET but they thought it didn’t take. Guess what....a beautiful young MF male called Firelad who is in this auction.

a/c. Greenwood —Reserved

Lot 16. Greenwood Thunderstruck

Light Grey Male

IAR: 209179 DOB: 24/03/14



Hope Downs El Gordo LG Blue Grass Waterloo Sunset RG
Sire: Greenwood Greylord NZ LG **Dam:** Distinction Rose Sunset LG
 Greenwood Mischa MG Cherry Hill GunsNRoses RG/Roan

Fleece: M: 20.8 SD: 4.7

Both Sire (exported) and Dam (National winner) are fantastic quality which shows in his dense fleece and type. He does have a slight blue flash in eyes (not deaf) and we know this breeds grey—refer previous sire and dam results. Very worthy of showing and using as herd sire.

a/c. Greenwood —Reserved

Lot 17. Aingeal Ridge Greystoke

Med Grey Male

IAR: 189726 DOB: 25/12/11



Banksia Park Khan SW Merungle Hot Chilli RG/Roan
Sire: Hillside Gardens Stefano SW **Dam:** Merungle GypsyWoman2 RG/Roan
 Hillside Gardens Miss Nuie Imp SW Merungle Gypsy Queen MBr

Fleece: TBA

Impressive genetics, well grown boy with lovely head and legs, nicely aligned heavy fleece cut with length of 110cm on 2nd year. Even grey. Very keen to work.

a/c. Greenwood—Unreserved

Lot 18. Lillyfield Pixie Rose

Solid White Female

IAR:201356 DOB: 16/3/14



Jolimont Alessio
Sire: Forestview Prince of Thieves **Dam:** Brabant Fairy Jane
 Blue Grass Choisi Brabant Ariana

Mated: Open

Fleece: 2014 M: 18.7 SD:3.4 CV:17.5 105 mls

Bred in the purple, both brothers are certified working Supreme Winning males. Sire & Dam both Supreme & Championship winning stock. Attractive female with a beautiful fleece. Good density & excellent coverage. Pixie is part of the core of Lillyfield breeding. Needs to be sold, part of a retired partnership.

a/c. Lillyfield—Reserved

Lot 19. Jarrack Park Octavia

Solid L Fawn Female

IAR: 183421 DOB: 15/06/14



Forestview Prince of Thieves Blue Grass Bollinger
Sire: Lillyfield Nureyez **Dam:** Jarrack Park Henrietta
 Wongadene Coppellia Jarrack Park Valkyrie

Mated: Open

Fleece: 2014 M: 16.7 SD: 3.5 CF 100% SF: 16.2

Beautiful young female with excellent frame & an outstanding pedigree full of show winning stock. She has a medium amplitude crimp style with great substance of bone & excellent density. A true breeding female. Needs to be sold, part of a retired partnership.

a/c. Lillyfield—Reserved

Lot 20. Lillyfield Dinnigan

Solid White Female

IAR: 201352 DOB: 4/12/13



Benleigh Lorimer Forestview Prince of Thieves
Sire: Elysion Lochinvar **Dam:** Lillyfield Prada
 Elysion Eleanor Lillyfield High Fashion

Mated: TBA Futura Momentum (Rosedeane Sayonara)

Fleece: 2014: M: 18.9 SD: 4.1 CF: 98% 140mls

Dinnigan has Highlander on both sides & is carrying a well-structured bright fleece with excellent density & a soft buttery feel. She is going to be shown & mated to one of the new stud males before the auction so stay tuned for updates. Dinnigan is a quality female, mated to Momentum she is sure to impress.

a/c. Lillyfield—Reserved

Lot 21. Alpha Centauri Arktika

S Light Fawn Male

IAR: 184078

DOB: 01/12/13



a/c. Alpha Centauri—Reserved

Benleigh Lorimer SW Shanbrooke Society Class Act SW
Sire: Elyson Jupiter SW **Dam:** Alpha Centauri Aerin SW
 Benleigh Jubilation SW Murragamba Poppy SW

Fleece: Sep 14: M: 17.0 SD: 3.7 CV: 21.5 CF: 100%

Arktika is a well grown male with an upright presence. He has the hallmark density from his 11 times Supreme Champion Sire - Elyson Jupiter. He has been shown this year and has been awarded 2 x 1st, 2 x 2nd and a 5th in a large class at the Sydney Royal Easter Show. His fleece was also awarded a 2nd place at the Sydney Royal. Arktika is to be certified prior to transfer.

Lot 22. Alpha Centauri Callahan

SMF Certified Male

IAR: 184034

DOB: 03/01/13



a/c. Alpha Centauri—Reserved

Shanbrooke Society Class Act SW Wyterrica Propaganda RG
Sire: Alpha Centauri Vyper SW **Dam:** Flying Colours Miss Charmer SDF
 Molonglo Xuanzong SW Flying Colours Miss Penelope SDB

Fleece: Sep 14: M: 21.6 SD: 4.4 CV: 20.4 CF: 96.6%

Callahan is a well grown male with a solid pedigree. He has been shown from Junior to Adult and has a fantastic show record. He was awarded Champion Adult Male at Camden Show 2015 and Reserve Champion Adult Male at both Wodonga Show 2015 & NSW Central West Region 2014. Callahan is a certified male and is willing and ready to work.

Lot 23. Alpha Centauri Sharlise

Solid White Female

IAR: 202965

DOB: 29/11/14



a/c. Alpha Centauri—Reserved

Benleigh Lorimer SW Adori Astro SW
Sire: Elyson Jupiter SW **Dam:** Elitealpaca Shanandoah W
 Benleigh Jubilation W Lotus Dream Star Jasmine SW

Mated: Open

Fleece: Untested

Sharlise is an upstanding, beautifully proportioned young female with a lovely head style. Her fleece is developing nicely and displaying well-defined character, brightness and a good level of density all packed on a great frame. She is the **ONLY** Female offered for sale sired by 11 time Supreme Champion - Elyson Jupiter. Sharlise was shorn as a cria on the 26/01/2015.

They're here,

They're working

And ready to serve...



At last years auction we were talking about eagerly anticipating the arrival of these new Snowmass stud males for the states. Now we can say that they are here and they haven't disappointed. Both males are working well and have confirmed pregnancies in our herd. So we are now offering a limited number of outside matings.

You can inspect stunning males on the day at the Breeders' Choice Auction. A few quick details:

What's striking about **Elite Transcendence** is the brightness, soft handle, deep crimp, good staple length and the outstanding consistency of his superfine fleece packed onto an imposing frame. We have used Transcendence in our recent ET program.

Royal Kahuna's silky white fleece is superfine, bundling, deeply crimped and bright and exhibits excellent staple length. Given that half his pedigree is coloured we expect that he will make a significant impact across our coloured girls and selected white females.

Full details and pictures available on our website

www.patagoniaalpacos.com.au

Share in these new genetics with our introductory package

Single mating **\$1,500***

Pack of 3 matings **\$3,900***

Choose your favourite male or try both males.

You can also hope to get lucky in the draw from successful auction bidders and win a free on farm mating to your choice of the two males.

* On farm mating at Meadow Flat. Limit of three matings per stud. (These can be taken with one male or combination of both males). Mobiles by negotiation.

Lot 24. Towarri Ginnie & F/Cria

S L Fawn Female

IAR: 153312 DOB: 11/07/09



Purrumbete Brigantine SW
Sire: Andean Park Ringmaster SW
Jolimont Roma SW
Purrumbete Driving Force SLF
Dam: Tarmaroo Winkie SW
Tarmaroo Amaretto SW

F/Cria at Foot: SLF Female by Towarri Arctic Star. DOB: 26/4/15
Mated: Towarri Arctic Star SLF. Mated 17/05/15
Fleece: Sept 14:M: 22.4 SD: 4.43 CV: 19.78 CF: 95.15% Cur: 35.42

Reliable breeding female from proven genetics. Has a soft handling fleece which she has passed on to her progeny and with the Arctic Star mating the cria has excellent fleece length with silky handle. Remated to Arctic Star, a recommended SRS male.

a/c. Towarri Alpacas—Reserved

Lot 25. Towarri Arctic Honeydew

S Med Fawn Female

IAR: 192347 DOB: 08/05/13



Ross Creek Arctic Lad SW
Sire: Towarri Arctic Star LF
Bonnie Vale Starlight SW
Bonnie Vale Oxley SW
Dam: Towarri Honeydew MF
Murrnaji Honeysuckle SLF

Mated: Flowerdale Proventor SW. Mated 20/12/14.
Fleece: Aug 2013: M: 20.56 SD: 5.03 CV: 24.5 CF: 96.5%

Well grown female with good frame. She has a long even fleece with a deep crimp. The mating with Proventor will continue to improve fleece density and fleece characteristics. Her genetics go back to Purrumbete Highlander and Jolimont Mister Sollocota.

a/c. Towarri Alpacas—Reserved

Lot 26. Alpacapartners Cacheral,Cria

S Light Fawn Female

IAR: 157020 DOB:08/09/10



Jolimont Warrior SW
Sire: Forestview Snow Warrior SLF
Jolimont Snow Bird W
Alpacapartners Glen Fiddoch SW
Dam: Alpacapartners Tequila SW
Alpacapartners Helaco SW

F/Cria at Foot: by Towarri Arctic Star. DOB: 13/4/15
Mated: Towarri Arctic Star SLF. Mated 15/05/15.
Fleece: Sept 14: M: 23 SD: 5.01 CV: 21.78 CF: 93.65% Cur: 33.08

Female cria at foot (DOB 13/04/15) from Towarri Arctic Star. Well grown female with good conformation and soft handling fleece. Excellent genetics of Jolimont Warrior. She has a stunning cria with fine bundling and Arctic Star's fleece characteristics – length and silky handle. Re-mated to Arctic Star, a recommended SRS male.

a/c. Towarri Alpacas—Reserved

Lot 27. Hunter Pudding & F/Cria S Light Fawn Female IAR: 167590 DOB: 12/12/11



Winterbrook P. John SW Jolimont Columbus W
Sire: Ellen Vale Palladium SW **Dam:** EKCo. Pebbles SW
 Ellen Vale Jocinda SLF EKCo. Camilla W

F/Cria at Foot: Hunter Pavlova By Hunter Excel SW **DOB:** 23/4/15
Mated: Hunter Excel **Last Mated:** 20/6/15
Fleece: Sept 14: M: 19.59 SD: 4.26 CV: 21.7 CF: 98.6% Cur: 55.6

Pudding an easy going lady and great mum, still exhibiting a very stylish fleece which is holding its fineness of micron and showcases a soft silky handle of long fine crimp staples.

Pudding was shown once and gained 3rd in her Light Fawn Class at Sydney Royal 2013.



Her Solid White Female Cria at Foot, Hunter Pavlova is to die for. Pavlova, sired by Multi Supreme Champion Hunter Excel is the first release of his female progeny. She carries fleece coverage from head to toe on a solid structure. Hands on you experience automatically a greasy, extremely dense fleece which opens up to fine bundles which are crimp and bright. Pavlova carries a lovely nature inherited from both her dam, sire and grand sire Hunter Absolute, she likes to say hello and have a scratch & kiss. Pudding is being re-joined to Hunter Excel, a unique bloodline package.



Hunter Excel

a/c. Hunter—Reserved

Lot 28. Elysion Miami Med Fawn Suri Female IAR: 189314 DOB: 30/3/14



Surilana Icalon LCA Tejas
Sire: Pinjarra El Nino **Dam:** Elysion Sandy
 Surilana Nina Belgrave Park Olivia

Mated: Maiden

Fleece: Oct 14: M: 19.7 SD: 5.2 CV: 26.4 CF: 97%

A lovely, golden fawn suri female with very good lustre. She is exhibiting god lock style on her regrowth fleece. Her sire and dam are both Supreme Champions. Miami is now ready to be mated.

a/c. Elysion—Reserved

Lot 29. Follyfoot Farm Cochise

Rose Grey Certified Male

IAR: 154808

DOB: 01/02/09



Barrabinda Bonza Star MF

Purrumbette El Dorado

Sire: Follyfoot Farm Black Onyx Blk

Dam: Follyfoot Farm Bonnie RG

Dural Dimety BLK

Rico Leonie MG

Fleece: 4th 2013: M: 28.2 SD: 4.8 CV: 18.21 CF: 72.9%

June 2015 TBA

Certified & working Stud male. A multi award winning son of a multi award winning Sire, Cochise's family tree speaks for itself, his own progeny are now in the show ring & winning their own Broad ribbons (Follyfoot Farm Tru Blu). A keen & independent worker, halter trained & easy to handle.

a/c. Follyfoot Farm—Reserved

Lot 30. Kyona Ebony

Solid Black Female

IAR: 198455

DOB: 14/04/14



Jolimont Centauri

Purrumbete Sir Titus Salt

Sire: Wyona Ceneschal

Dam: Jurustalle Joy of Seville

Wyona Money Penny

Jurustalle Orchid

Mated: Open

Fleece: M: 18.9 SD: 4 CV: 20.9 CF: 99.1% Cur: 32.9

Ebony is a quiet female who has a very fine and soft handling fleece. Ebony's has fine bundles of crimply fleece that is quite lustrous. She is a well framed young female that is quite to handle, she would make a great addition for the coloured breeder.

a/c. Kyona—Reserved

Lot 31. Windsong Valley Knight

S Light Fawn Male

IAR: 140083

DOB: 16/12/08



Jolimont Warrior

Windsong Valley Taboo

Sire: Windsong Valley Firedragon

Dam: Windsong Valley Summer

Windsong Valley Starbright

Shanbrooke Madonna

Fleece: M: 26 SD: 3.8 CV: 13 CF: 88% Cur: 37.5

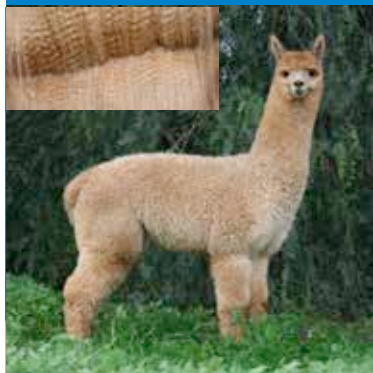
Knight is a well conformed certified male, his cria are all displaying fleeces that are fine, soft handling and medium density. Although he is registered as light fawn his fleece is white. Here is an opportunity to pick up some fantastic Firedragon genetics.

a/c. Kyona—Reserved

Lot 32. Wyona Jamayka

S Dark Fawn Female

IAR: 200291 DOB: 1/10/14



Shanbrook Accoyo Invincible SW Running Creek Frontera SLF
Sire: Shanbrook Jamaican Sunset SMDr **Dam:** Wyona Fabalicious SDF
 Aspen Starlet Blk Wyona Fabienne SLB

Mated: Sold with a free service to any sire owned by Wyona at time of purchase

Fleece: M: 20.32 SD: 4.58 CV: 22.66 CF: 97.1% Cur: 53.33

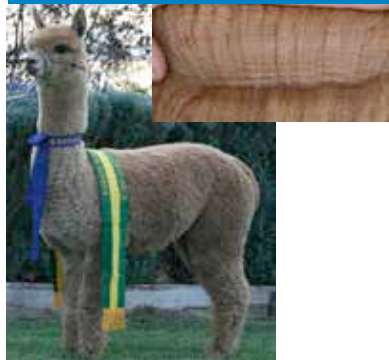
An Absolutely beautiful daughter from our Shanbrook male Jamaican Sunset, himself a multiple ribbon winner. Her dam was also a broad ribbon winner. Jamayka is very well grown for her age with excellent proportions and strong bone throughout her frame. She is growing a very long staple with a distinct, medium style of crimp from tip to skin. Shown twice this year, winning and placing both times.

a/c. Wyona—Reserved

Lot 33. Wyona Fabuloso

S Dark Fawn Male

IAR: 200262 DOB: 27/04/14



Running Creek Tirawa SW Elsendale Fernando SMF
Sire: Running Creek Frontera SLF **Dam:** Wyona Fabienne SLBr
 Running Creek Hopi W Wyona Lindt SMB

Fleece: 2014 1st: M: 18.49 SD: 4.92 CV: 26.49 CF: 97.65%
 SF: 18.96 Cur: 49.64

A truly handsome son from RC Frontera, our super solid light fawn sire who has produced a phenomenal number of show winning offspring for Wyona. Well grown, upstanding, gentle temperament with an incredibly dense, fine and super soft fleece. Winner of numerous show ribbons this year. **2015 Shows. 1st Jnr MDFawn—Gunning ,Bathurst Royal. 2nd & R/Ch Jnr Male Boorowa .**

a/c. Wyona—Reserved

Lot 34. Koyaanasqatsi Robiniquie

L Grey Female

IAR: 75718 DOB: 16/9/05



Jolimont Warrior SW Faiks Grey Lord MG
Sire: BG Waterloo Sunset RG **Dam:** Koy. Angelique LG
 Alpacos Park Ariel SW Koy. Licquorisch SLBr

Mated: Open

Fleece: 7th: M: 21.8 SD: 3.9 CV: 17.9 CF: 96.6%

Beautiful silver grey, no spots. Has produced 7 quality cria, mostly grey. Lovely nature and ready to be joined to a male of your choosing.

Fleece Stats are still very impressive.

a/c. Hilldale Park— Reserved

Lot 35. Hilldale Park Roxon

Solid White Female

IAR: 181281

DOB: 12/1/14



Somerset A. Challenger SW Andean Park Ringmaster SW
Sire: Banksia Park A. Invador SW **Dam:** Leranda Ridge Roxette SW
 Somerset A. Intense SW Windsong Valley Rose Gold SLF

Mated: Maiden

Fleece: 2014: M: 18.27 SD: 3.97 CV: 21.7 CF: 99.6% SF: 17.9

Roxon is a well grown young female. She has a soft handling fleece with well defined crimp. Both parents still exhibit low micron. We are retaining her younger sister in our breeding programme. 2nd in her class at Royal Toowoomba Show 2015. Reserve Champion Intermediate Female New England –June 2015

a/c. Hilldale Park— Reserved

Lot 36. Hilldale Park Rosharn

Dark Fawn Female

IAR:181277

DOB:1/12/13



Glenhope Bakari SMF Canchones Celedonio SW
Sire: Hilldale Park Silken Prince SDF **Dam:** Hilldale Park Rochelle SMF
 Beringya Downs Silk Delight SBL Hilldale Park Rebekah SLF

Mated: Maiden

Fleece: 2014: M: 18.78 SD: 4.35 CV: 23.2 CF: 98.9% SF: 18.6

A daughter of 2 Supreme Champions, Rosharn was awarded a blue ribbon at Royal Toowoomba Show 2015. She is from our best producing female line and would be an asset to any coloured breeding plan.

Reserve Champion Adult Female New England—June 2015

a/c. Hilldale Park— Reserved

Lot 37. Hilldale Park Sandrine

Dark Fawn Female

IAR:181285

DOB:22/3/14



Banksia Park Khan SW Shanbrooke A. Yavari SW
Sire: Hillside Gardens Stefano SW **Dam:** Blaydon Yavari's Rose SW
 Hillside Gardens Miss Nuie SW Belbournie Jericho Rose SW

Mated: Maiden

Fleece: 2014: M: 18.32 SD: 3.91 CV: 21.3 CF: 99.3% SF: 17.9

An impressive young female with a very soft handling fleece. She has a pedigree that includes Warrior, Khan and Yavari. We are retaining her younger sister in our breeding programme. Sandrine was awarded a blue ribbon at 2015 Royal Toowoomba Show.

a/c. Hilldale Park—Reserved

Lot 38. Patagonia Sunray

White Female

IAR: 163678 DOB: 24/3/10



Patagonia Celtic Triumph
Sire: Patagonia Celtic Rising Sun
Patagonia Sunline

Shanbrooke Acc. Yavari
Dam: Patagonia Boadicea
River Heights Caudillo Princess

Mated: Snowmass Elite Transcendence W LMD 2/6/2015
Fleece: Oct 13: M: 19.5 SD: 4.1 CV: 21.2 CF: 99% Cur: 42.6

Sunray is a white female presenting quite a rare package of blood-lines. Her sire (now at stud in NZ) and her dam are by the highly regarded Shanbrook Accoyo Yavari. Sunray combines an imposing frame with a dense, soft-handling, crimped fleece that is maintaining micron very well with age. The mating to Elite Transcendence provides an ideal match to enhance brightness, density and length without compromising fineness and handle

a/c. Patagonia—Reserved

Lot 39. Patagonia Sun-Razzle

Roan Certified Male

IAR: 187114 DOB: 25/10/12



Patagonia Celtic Triumph
Sire: Patagonia Celtic Rising Sun
Patagonia Sunline
Fleece: Nov 14: M: 18.6 SD: 3.9 CV: 20.8 CF: 99.3% Cur: 41.8
L: 125 mm

Swan Valley Achiever
Dam: Patagonia Paparazzo
Nicholi Park Princess

Patagonia Sun-Razzle is our star pick for this year's auction. He is a well grown **Certified Roan Male** with a number of confirmed pregnancies underway. At his most recent show the judges complimented him on his fine, heavy cutting, stylish, soft and even coloured fleece exhibited right across his body. 2014 fleece results (above) back up these comments—18.6 micron with an SD of 3.9 and a very impressive 125mm staple length. Also of note are his heavy bone, correct conformation and good temperament.



Like his sire, Patagonia Rising Sun ET (now at Stud in NZ) Razzle just gets better and better with age. He is out of one of our white females, Patagonia Paparazzo, whose Grandsire, Swan Valley Elite, has bred a number of high quality greys. Razzle is related to much of our herd so we are offering him at auction to give him the chance to fulfill his promise as a quality coloured stud male.

Show Results: 3rd Grey Intermediate Male Sydney Royal 2014, 3rd Grey Intermediate Male Colourbration 2014
1st Senior Roan Male and Reserve Champion Male Roan—Goulbourn Carousel of Colours 2015.

a/c. Patagonia—Reserved

Lot 40. Forestglen Diminuendo

Solid White Male

IAR: 197001 DOB: 9/5/13



Windsong Valley Kosiosko SW Hillside Gardens Napoleon SW
 Sire: Windsong Valley Avalanche SW Dam: Forestglen Musique SW
 Windsong Valley Pashmina W Forestglen Sound of Music SW

Fleece: Nov 14 M:19.7 SD:3.3 CV: 16.9 CF: 99.4% SL:115mm
 Fleece: Nov 13 M: 17.8 SD:3.8 CV: 21.4 CF: 99.9% SL: 80mm

Diminuendo="getting softer" His fleece is very bright white, exhibiting a bolder crimp style, long staples and a luxurious handle. His pedigree is white, white, white. Well conformed, well behaved, for a breeder interested in increasing fleece weights while maintaining micron. Show ribbons will be on display.

a/c Forestglen—Reserved

Lot 41. Forestglen Moscadello

S Light Fawn Male

IAR: 195250 DOB: 21/4/13



Forestglen Maestro SW Purrumbete Inti SMF
 Sire: Forestglen Angelo SMF Dam: Forestglen Marsha MF
 Forestglen Anatola LF Forestglen Margot DF

Fleece: Nov14: M: 17.6 SD: 3.7 CV: 21.2 CF: 99.6% SL: 80mm
 Fleece: Nov13: M: 17.2 SD: 4.2 CV: 24.1 CF: 100% SL 95mm

Compact, well conformed young stud, with soft, dense, fine crimping fleece. Amiable temperament. Show ribbons will be on display.

a/c. Forestglen— Reserved

Lot 42. Jandarra Adele

Solid White Female

IAR: 172511 DOB: 4/12/11



Peruvian Sire Jandarra Jack Flash
 Sire: Windsong Valley Royal Inca Dam: Jandarra Divinyl
 Peruvian Dam Somerset Peruvian Queen

Mated: Jandarra Buccaneer 3/08/14

Fleece: 3rd M: 23.3 SD: 4.1 CV: 17.4 CF: 94.9%

Adele has elite genetics with her sire Legendary Winsong Royal Inca and great grandsire Shanbrooke Accoyo Yavari. She is the perfect package: good conformation, sweet nature, show record and the icing on the cake her 1st progeny Jandarra High Roller was awarded 2nd Jnr white male at the 2015 Carousel of Colour Show. Adele herself was awarded a H/C in a large Jnr white class at 2012 Charles Ledger. Adele comes with a cria in utero, by Jandarra Buccaneer, an award winning son of EP Cambridge Spartacus, 4th Fl. 18.9m,4.4sd,23.4cv. For Buccaneer's credentials refer to our Web-site www.jandarraalpacos.com

a/c. Jandarra Alpacas— Reserved

Lot 43. Millpaca Donita Et

S True Black Female

IAR: 184180 DOB: 12/11/12



Sire: Kurrawa Harley SBI
Koorana Park Bl. Knight
Kooran Park Rani DBr

Dam: Canchones Gendarme
Canchones Desire SBI
Canchones Dna Et SBI

Mated: Millpaca Bravo STB Last Mated 16/6/15

Fleece: Nov 14. M: 19.7 SD: 4.7 CV: 23.8 CF: 97.1% SF:19.66

An attractive blue black female with black genetics on both sides. Her fleece is silky and lustrous with a super fine crimp. A superior female to enhance your coloured herd.

a/c. Millpaca - Reserved

Lot 44. Millpaca Sun Silk Et

S True Black Female

IAR: 194430 DOB:2/2/13



Sire: Canchones Phenomenon STB
Canchones YataganEt STB
Yacka Ridge Yasmin STB

Dam: Kooran P. Bl. Knight
Longueville P. Sundancer
Longueville P Montrose

Mated: Millpaca Bravo STB Last Mated: 16/6/15

Fleece: Nov 14. M: 20.1 SD: 4.7 CV: 23.6 CF: 96.5% SF:20.02

Black breeders will recognise the qualities of this female. Out of one of Millpaca's elite donor females and top stud males, her genetics are much sought after. With her fine crimping dense fleece, she would be an asset to any coloured breeder. She will improve your coloured genetics and fleece to the next level.

a/c Millpaca—Reserved

Lot 45. Kia Ora View Amari-361

Solid White Female

IAR: 191925 DOB: 12/2/14



Sire: Jolimont Columbus W
Hunter Raptor SW
EKCo. Radiance SW

Dam: Peruvian
Jolimont Guiseppina W
Jolimont Annie 2 SW

Mated: Hunter Excel SW Paddock Mated 12/4 - 9/5/15

Fleece: Nov 14: M: 20.9 SD: 4.6 CV: 21.8 CF: 95.9% Cur: 38.9

Very well developed young female with Huge Potential as an outstanding breeding female. 1st shearing at 9 months, saddle alone cut over 1.9kg. Sired by Hunter Raptor who has soft rolling skin, hence an extremely dense, greasy, stylish fleece which is passed onto his progeny. Genetics of Champion Jolimont Columbus now joined to bloodlines from Champions Hunter Excel ,Hunter Absolute, Jolimont Cassius & Jolimont Clodiana & Ellen Vale Palladium via Hunter Duchess & Hunter Macusani.

a/c Kia Ora View—Reserved

Lot 46. Cedar House Royal Victoria

Solid White Female

IAR: 195452 DOB: 25/03/14



C H Tijera Hugo SW
Sire: C H Mr Bojangles SW
Burnigula Evita LF

C H Tijera Hugo SW
Dam: C H Chieftan Princess W
C H Winter Delight SW

Mated:
Fleece:

A superior, upstanding, well grown female with a super conformation and trueness to type. She is super fine, with very low primary fibres and excellent uniformity across the entire fleece. She has fine bundling and deep crimping. An excellent example of the best quality that C H Mr Bojangles is known for.

a/c. Cedar House — Reserved

Lot 47. Cedar House Ginger Lily

Appaloosa Female

IAR: 208266 DOB: 14/04/14



C H Tijera Hugo SW
Sire: C H Mr Bojangles SW
Burnigula Evita LF

Porters Illusion SMB
Dam: Westwood Annastasia DB
Westwood Serina SMB

Mated:
Fleece:

A stunning, super fine, deep crimping appaloosa by Mr Bojangles. He has produced some stunners and she is another of those. Great amounts of strands of colours all over her body. Perfect upstanding conformation and attitude.

a/c. Cedar House — Reserved

Lot 48. Cedar House Blackberry

Solid Black Female

IAR: 208261 DOB: 7/05/13



C H Amar SB
Sire: C H Virgil Tibbs SB
C H Black Lace 2 SB

C H Midnight King SB
Dam: Yuralee Licorice Lace SB
River Ridge Rebel B

Mated:
Fleece:

A very upstanding stylish female with good coverage, crimp and evenness of micron. She is fine, soft and overall a very pleasing black girl from our well regarded black male, Virgil Tibbs. Her sire is soon to leave our shores for EU so this will be a rare opportunity to secure his bloodlines which have proven to be sound producers.

a/c. Cedar House — Reserved

Lot 49. Jandarra Crystal

Med Fawn Female

IAR: 197230 DOB: 15/03/14



Patagonia Celtic Triumph
Sire: Warralinga Celtic Lad
Warralinga Honeysuckle Rose

Banksia Park Zulu Chaser
Dam: Warralinga Columbine
ElySION Chanel

Mated: Jandarra Buccaneer

Fleece: 1st: M: 18.4 SD: 4.8 CV: 26.1 CF: 98.1%

Crystal is a beautiful female with a flawless conformation and great genetics. She is also sweet natured. Her colouring is a medium fawn blanket transitioning to a light fawn/white neck. Her fleece is soft handling with good density and crimp style. With Celtic Triumph, Warrior, Challenger and El Dorado in her pedigree she would be a good start for a quality coloured breeder. She comes with a mating to Jandarra Buccaneer, an award winning son of EP Cambridge Spartacus, 4th Fl. 18.9m, 4.4sd, 23.4cv. For Buccaneer's credentials refer to our Website www.jandarraalpacos.com

a/c. Jandarra —Reserved

Lot 50. ElySION Lucille

White Suri Female

IAR: 189315 DOB: 2/4/14



Surilana Icalon
Sire: Pinjarra El Nino
Surilana Nina

ElySION Oliver Twist
Dam: ElySION Leilani
EP Cambridge Intergaze

Mated: Maiden

Fleece: Oct 14: M: 13.7 SD: 3.4 CV: 25 CF: 100%

Ultrafine female with an excellent covering of lustrous locks. Already excelled in the show ring with two Supreme Champion awards and Grand Champion Female Suri at Sydney Royal 2015. Superbly bred with supreme champions throughout her pedigree. A chance to own one of the best.

a/c. ElySION —Reserved

Lot 51. Hunter Sophie —293

S Med Fawn Female

IAR: 191883 DOB: 20/5/12



Jolimont Hudson SW
Sire: Jolimont Columbus W
Jolimont Felicetta SW

ElySION Mercury LG
Dam: ElySION Stella RG
Janannie P. Guilella MG

Mated: Hunter Excel W Paddock 1/1 to 28/2—Scanned Positive
Fleece: Nov 24 M: 26.7 SD: 4.8 CV: 17.9 Cur: 34.7 L: 110 mm

Sophie, sired by Grand Champion Male Jolimont Columbus, is still producing a long and crimped fleece. Sophie has already produced a Dark Fawn Cria from bloodlines of Grey & White. This mating to Multi Supreme Champion Hunter Excel will only enhance the fibre and add bone structure to this well grown young female.

a/c. Hunter—Reserved

Lot 52. Follyfoot Farm Fabulicious

S Med Fawn Female

IAR: 211251 DOB: 25/12/14



Shubert Maestro W

Greenwood Bentley MG

Sire: Belgrave Park Michelangelo MF

Dam: Stedephra Christelle

Belgrave Park Kasey DB

Belgrave Park Athena BLK

Mated: Maiden

Fleece: TBA

Extremely well covered female on a very solid frame, who carries long bundles of crimped fleece. Her genetics include grey on both sides, so mated back to MG might produce a super quality grey cria. Fabulicious is show quality, halter trained & easy to handle.

a/c. Follyfoot Farm—Reserved

Lot 53. ElySION Rigby

Solid White Male

IAR: 164115 DOB: 24/04/11



Benleigh Lorimer

ILR Peruvian Snowmaster

Sire: ElySION Jupiter

Dam: ElySION Eleanor

Benleigh Jubilation

ElySION Ella

Fleece 4th: Oct 14: M: 20.3 SD: 4.5 CV: 22 CF: 96.8%

A beautifully presented male with great conformation and excellent style with a bright fleece showing a medium amplitude crimp evenly across the body. Retaining very respectable fleece stats as he ages. Guaranteed certifiable and fertile.

a/c. ElySION—Reserved

Lot 54. Follyfoot Farm Isadorable

Med L Brown Female

IAR: 155023 DOB: 24/4/09



Barrabinda Bonza Star M

Peruvian El Jefe W

Sire: Follyfoot Farm Black Onyx BLK

Dam: Brucrifay Aerial DF

Dural Dimety BLK

Milvet Jezabel DF

Mated: Wyona Censational BLK LMD 11/4/15

Fleece: 6th 2014: M: 23.5 SD: 4.7 CV: 20 CF: 92.4%

Isadorable is a quality proven female, an excellent mother, she had success in the show ring with one 1st and two 2nd placing's, she is halter trained and is easy to handle, a sweet natured smaller framed girl who is holding a fine fleece which she passes on to her cria.

a/c. Follyfoot Farm—Reserved

Lot 55. Alpha Centauri Comanchero

White Male

IAR: 184093 DOB: 11/01/14



Woodland Chase Milagro SW Shanbrooke Society Class Act SW
Sire: Alpha Centauri Comanche LF Dam: Alpha Centauri Biankah SLF
Alpha Centauri Shanoa LF Alpha Centauri Makenna SW

Fleece: Sep 14: M: 21.6 SD: 4.4 CV: 20.4 CF: 96.6%

Comanchero is an upstanding young male. He has great length to his fleece with a good level of density, brightness and character expression. Exceptional softness of handle inherited from his sire. He was awarded Reserve Champion Junior Male at the NSW Central Western Regional Show in 2014. Comanchero is to be certified prior to transfer.

a/c. Alpha Centauri—Reserved

Lot 56. Alpha Centauri Keeva

Solid White Female

IAR: 202951 DOB: 19/05/14



Adori Accoyo Altaz SW Shanbrooke Society Class Act SW
Sire: Alpha Centauri Outlaw SW Dam: Alpha Centauri Kamria SW
Molonglo Xuanzong SW Xanadu Moondance SW

Mated: Elysion Jupiter SW LMD 25/05/15

Fleece: Sep 14: M: 18.5 SD: 4.6 CV: 21.5 CF: 99%

Keeva is an attractive young female currently mated to Elysion Jupiter. She produces a long fleece with a good level of character expression and density. Keeva has some of the best white genetics our herd has to offer in her pedigree and should produce something special with her mating to Jupiter.

a/c. Alpha Centauri—Reserved

Lot 57. Alpha Centauri Talkeetna

Black Male

IAR: 184076 DOB: 24/11/13



Monara Park MacKinnon SBI Daisy Balnk Callisto SBlk
Sire: Wyterrica John Boy SBlk Dam: Alpha Centauri Tarliah SBlk
Wyterrica Sophia Blk Accapacca Priscilla SBlk

Fleece: Sep 14: M: 23.5 SD: 5.1 CV: 21.6 CF: 90.4%

Talkeetna is a compact young male with heaps of personality. He produces a long fleece, with a good level of character and brightness. He has been shown this year and has been awarded 1st places at Bathurst Royal, Camden Show, Wodonga Show and Canberra Royal. A True Black male display the qualities of his Exceptional Sire. Talkeetna is to be certified prior to transfer.

a/c. Alpha Centauri—Reserved

Lot 58. Elsendale Georgio

Light Grey Male

IAR: 176219 DOB: 20/03/12



Brookleaa Ridge Callahan MG Janannie Park Rousseau MG
Sire: Booyong Galileo RG/Roa **Dam:** Elsendale Roseanna LG
 Booyong Blush RG/Roan Coolaroo PJS Rheala SBK

Fleece: M: 25.0 SD: 5.1 CV: 20.3

Purchased because registered as Light Grey however he is actually Fawn/Roan. Despite this he is a beautiful, proud macho with impressive genetics. Has been shown with success. As his background is very grey he would do well over dark grey or black females to breed grey. Very keen to work.

a/c. Greenwood — Unreserved

Lot 59. Greenwood Firelad

S Med Fawn Male

IAR: 209716 DOB: 1/04/14



Banksia Park Khan ET SW Wytterica Propanganda RG
Sire: Hillside Gardens Stefano ET SW **Dam:** Aingeal Ridge Firenze MG
 Hillside Gardens Miss Nuie Imp SW Merungle Gypsy Woman 2 RG

Fleece: M: 18.6 SD: 4.8 CV: 26.6

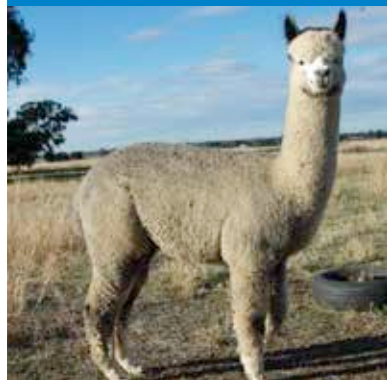
Fantastic genetics, dense and well structured fleece with great head and leg coverage. Will make a worthy herd sire. Dam has very impressive show record.

a/c. Greenwood—Unreserved

Lot 60. Greenwood Jetmaster

Med Grey Male

IAR: 209717 DOB: 4/02/14



Cedar House Virgil Tibbs SBK Blue Grass Rising Sun DG
Sire: Cedar House Altitude DG/Roan **Dam:** Elsendale Rosita DG
 Cedar House Syria SDF Coolaroo PJS Rheala SBK

Fleece: M: 20.3 SD: 5.4

Sire needs no introduction and his dam has produced well this young male. Friendly, well grown and beautiful soft handling fleece. Certainly worthy of running on as a potential herd sire.

a/c. Greenwood - Unreserved

A Note From The Breeders...

Alpha Centauri Alpacas—Specialising in White & Light Fawn Huacaya. By careful selection of alpacas with exceptional genetic backgrounds we produce quality alpacas with breeding predictability and sound conformation, growing a distinctive fleece which is highly sought after in both breed and commercial fleece industries.

Cedar House Alpacas—Breeding Alpacas continually since 1989. The stud has developed its line of super fine stock from the most influential sires to ever leave Peru over many years. In combination with selective culling, attention to details of fibre traits and good husbandry, we are proud to present a selection of quality at this year's auction. We welcome any visitors at any time to view the stud and discuss breeding selections.

Elyson Alpacas—Paul and Fran Haslin have been breeding Suri and Huacaya since 1997. They offer top quality breeding stock for sale, including successful show ring performers. Elyson Alpacas is handily situated, just 5 minutes off the freeway, in the Southern Highlands, mid-way between Sydney and Canberra.

Follyfoot Alpacas



Forestglen Alpacas—Established by Maureen Carey, (now retired, but still involved) on the Central Coast of NSW—then moved west to Millthorpe where today Forestglen is still located and run by daughter Jennie Staples. Fleece production, always high on our agenda, has resulted with an exceptional performance over many years of producing high quality fleeces, producing many achievements and awards.

Green Gully Alpacas—We started in 2005 and our love and fascination with these unique animals continues to grow. Our herd of 100 huacayas thrives in the New England climate and we are proud of the quality of alpacas that we are producing and offering for sale. The ongoing health and wellbeing of our alpacas is most important to us, so we are very happy to provide ongoing advice and support.

Greenwood Alpaca Stud—Breeders of predominantly light, medium and dark grey for 20 years. We have downsized farm and breeding and are now offering some of our tightly held super females who reliably breed quality grey. All females are empty—ready for your choice of stud male. Also limited males with fantastic proven genetics.

Hilldale Park Alpacas—Established in 2004, we moved to the fine wool growing area of the New England Tablelands in 2008. Our aim is to produce alpacas of sound conformation, good temperament and quality fleece from our small elite herd.

Hunter Alpaca Stud—Since 1994, producers of huacaya and suri, predominantly specialising in whites, we have not overlooked our coloured alpaca herd. Many of our bloodlines have been obtained via our trips to South America, thus adding elite advancement to our herd. Producing alpacas with solid, correct frames who carry aligned long staples, extremely bright fleeces of high fibre weight, but maintaining fineness with minimal primary fibre. Over many years our breeding objectives have gained us high level results for both our animals and fleeces. Known throughout the world for our breeding, we are honoured to once again offer you a selection at this auction.

A Note From The Breeders...

Jandarra Alpacas—A boutique award winning stud located at Pambula on the far south coast of NSW. Jandarra's show successes at the highest level come from a small herd of elite breeding females entwining Australia's best bloodlines.

Kia Ora View—Breeders of dense, fine Huacaya using genetics that have been proven in and out of the show ring. Now retired from the farm, we are still focused on producing an elite small herd, with attention to fibre length, crimp, fineness, lack of guard hair and handle.

Kyona Alpacas—Established in 2005 as a family business, operated by sisters-in-law, Kylie Streatfeild and Fiona McKenna. We have a small herd of quality huacayas, mainly focusing on breeding whites, but also an interest in breeding coloured alpacas. Kyona Alpacas selects herd sires who have elite and proven genetics. SRS breeders and have already seen benefits with great improvements in fleece production.

Lillyfield Alpacas—Breeding Generations of Champions with long term fineness, commercial fibre length, great capacity and substance of bone. Focusing on fawns but excelling in breeding exceptional whites.

Millpaca



Pacofino—After 15 years of breeding Suris and Huacayas and achieving consistently good show results, we can positively say that our original choice of excellent genetics in our females and stud males has flowed through our breeding program and resulted in progeny with strong, solid frames and dense, fine and lustrous fleeces.

Patagonia Alpacas—Since 1996, Patagonia's quest is to breed the ultimate elite Australian alpaca. With alpaca positioned as a luxury natural fibre, we realise the importance of focusing on the key attributes that reinforce this positioning—high lustre, softness and silky soft handle. In our breeding program we select for high fleece weights, strong crimp definition, ultra-soft handle, long fibre length and brightness. Located in an area with lush pastures and ideal climate for alpacas, you can be reassured that when you buy ultrafine or fine animals from us you are getting robust animals with genetic fineness—not microns resulting from less than ideal feed conditions. We are happy to work with experienced and new breeders in the industry to progress towards a common goal of achieving the, as yet, untapped potential of alpacas in Australia.

Towarri Alpacas—Established in 2004 in the Upper Hunter. Our aim through the SRS breeding program is to increase density, fibre length, and crimp definition which leads to low micron and higher fleece weights. We have achieved this by using our own sires, Artic Star and Flowerdale Proventor, as well as other recommended SRS sires. Our main lines are whites and light fawns but we also have an interest in breeding a small number of quality coloured animals.

Wyona Alpaca Stud—Wyona Alpaca stud was the first to be established in NSW in 1989. Having been highly successful in the show ring, Karen is accredited to judge both within Australia and Internationally. Wyona strives to produce a consistency of fine micron fleece with a follicular density that is sustainable for our climatic region. Wyona Alpacas are bred to produce the best possible fleece on a strong, correct frame, with a gentle temperament.

Breeders Choice Alpaca Auction

Listings Available for 2016's Auction

Contact - bth.has@hunterlink.net.au Ph: 02 4934 1799

Accommodation

Bowrall (North) - 30 to 45 Minutes

Moss Vale (North) - 30 Minutes

Bundannon - 20 minutes

Marulan (South) - 15 minutes

Goulburn (South) - 25 Minutes

Southern Highlands—Loads of accommodation from Pubs, Motels to B & B

Google your Accommodation or use Southern Highlands Visitors Centre.

Breeders **C**hoice **A**lpaca **A**uction



Breeders Choice Alpaca Auction

Auction—Sunday 30th August 2015

Mail Address : PR & NR Tulip

537 Louth Park Rd

East Maitland...NSW...2323

Ph: 02 4934 1799

www.hunteralpaca.com.au

POSTAGE

PAID

AUSTRALIA